



FI-CS4W

Two-way ceiling speaker



Features

- Two-way ceiling speaker for commercial audio applications
- Separate woofer and tweeter for excellent sound quality
- 360° rotatable tweeter
- Full protection of the transformer
- Convenient magnetic front Grill
- Easy, fast and safe fastening system
- Suitable for high impedance (70/100 V) voltage line and low (8Ω) installations
- High resistant ABS housing that protects it from heat and ensure long lifetime
- Suitable for paging and background music applications

Applications

- The ceiling speaker is ideal for applications where excellent sound quality is needed for medium-volume music playback and paging, such as in music cafes, retail stores, airports, reception / waiting rooms, lounges, courtrooms, convention centers, hotels, educational facilities and more.

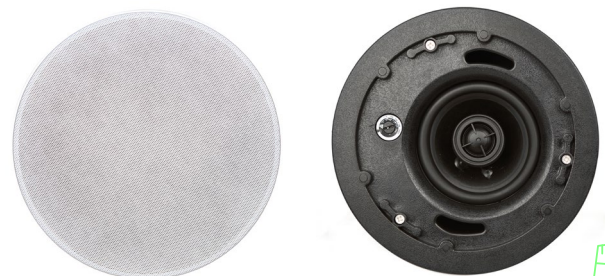
The ceiling speaker FI-CS4W is white, with an ABS housing and metal protecting grille.

The simple and discreet design and good reproduction of both speech and music enable it to fit perfectly into any architectural environment. The built-in transformer enables it to be connected to constant voltage lines with variable power.

The FI-CS4W is a ceiling speaker with separate woofer and tweeter. It provides high sound quality in your installation.

Its power tap selector makes it suitable for high (70V/100V) voltage line and low impedance (8Ω). The transformer is contained within a metal can enclosure to improve response.

This ceiling speaker is designed to offer an economic and professional solution to contractors.



Specifications

General Specification	
Type	FI-CS4W
Frequency response	90 -20 KHz
Sensitivity	87 dB @ 1 watt / 1 meter
Power taps	20/10/5/2,5W; 8 Ω : 40W
Rated power	20 W; 8 Ω : 40 W
Line input	100 V / 70 V; 8 Ω
Hole for mounting (mm)	ø 180
Dimensions (L x H)	ø 204 x 137 mm
Physical Specification	
Material (panel)	ABS White RAL 9016
Grille	Powder Coated Iron Mesh
Component (L.Speaker)	4" (PCK + PF) Woofer
Component (H.Speaker)	3/4" Silk
Finished Colour	White RAL 9016
Unit Weight	2.1 Kg
Gross Weight	12.4 Kg / 4PCS
Packing Dimension	58 x 55 x 28 cm
Woofer Speaker Specification	
Voice Coil Size	ø 25.8*0.17*2Layer
DC Impedance	7Ω
Former	KSV
Magnet	Ferrite (416g) ø 90*ø 32*15(Y30)
Basket	Iron
Cone Material	PCK + PF
Spider	CONEX
Net Weight	795 g

