



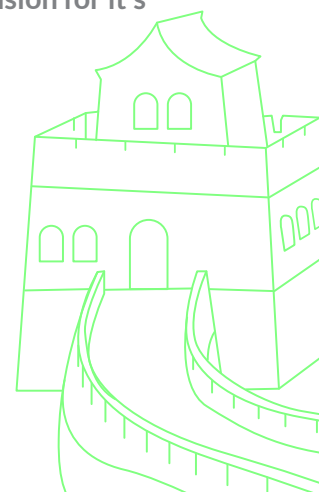
FI-Sub10P

Ultra-compact Active cube subwoofer



The Fi-Sub10P is an ultra-compact cubic passive subwoofer dedicated to the installation market.

The front firing 10" woofer is back loaded by two side 10" passive radiators, providing an extreme low frequency extension for its modest size.



Features

- Extreme discreet look
- Light weight
- Extreme low end extension
- High efficiency, allowing supporting multiple full range installation speakers

Applications

- Ideal for larger size cafés, restaurants, lounges, house of worship installations
- Ideal for home theatre



Specifications

Acoustics	
Frequency response	40 Hz – 150 Hz
Power handling	250W
SPL @ 1W @ 1M	114dB Cont. – 120dB Peak
Impedance	4 Ohms
Transducers	10" with dual passive radiator
Physical	
Net Weight	12 Kg (26.4 lb)
Dimensions WxHxD	32 cm x 36 cm x 33 cm (12.6" x 14" x 13")

