



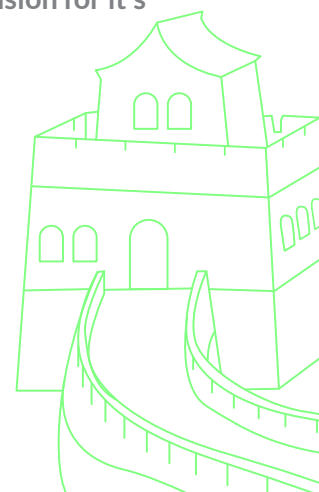
FI-Sub10A

Ultra-compact Passive cube subwoofer



The FI-Sub10P is an ultra-compact cubic active subwoofer dedicated to the installation market.

The front firing 10" woofer is back loaded by two side 10" passive radiators, providing an extreme low frequency extension for its modest size.



Features

- Extreme discreet look
- Extreme low end extension
- High efficiency, allowing supporting multiple full range installation speakers
- High power 200W Class AB amplifier
- Multiple controls allowing adjusting of level, LPF frequency, Phase

Applications

- Ideal for larger size cafés, restaurants, lounges, house of worship installations
- Ideal for home theatre



Specifications

Acoustics	
Frequency response	40 Hz – 150 Hz
Power handling	250W
SPL @ 1W @ 1M	114dB Cont. – 120dB Peak
Impedance	4 Ohms
Transducers	10" with dual passive radiator
Amplifiers	
Power Voltage	Fixed 110V or 220V
Operating Voltage	110V (100V to 125V) 220V (200V to 245V)
Max Output 1% THD	200 Watts @ 4 Ohms
Protections	Short Circuit, Thermal, Overload
Physical	
Net Weight	15.7 Kg (34.5 lb)
Dimensions WxHxD	32 cm x 36 cm x 33 cm (12.6" x 14" x 13")

